

love the way



# VIA Rail's Sustainability Journey



# Business Development & Sustainability

Overview

Trends

Challenges

Opportunities

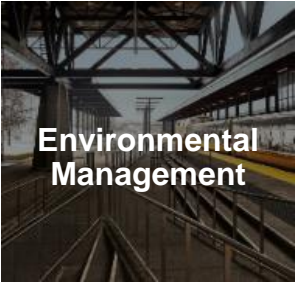





# VIA Rail's sustainability journey

## 2021-2025 Sustainability Plan

Environmental

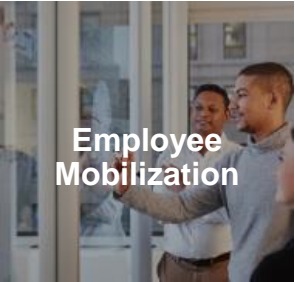


Environmental Management




Climate Action

Social




Employee Mobilization




Community Engagement

Governance

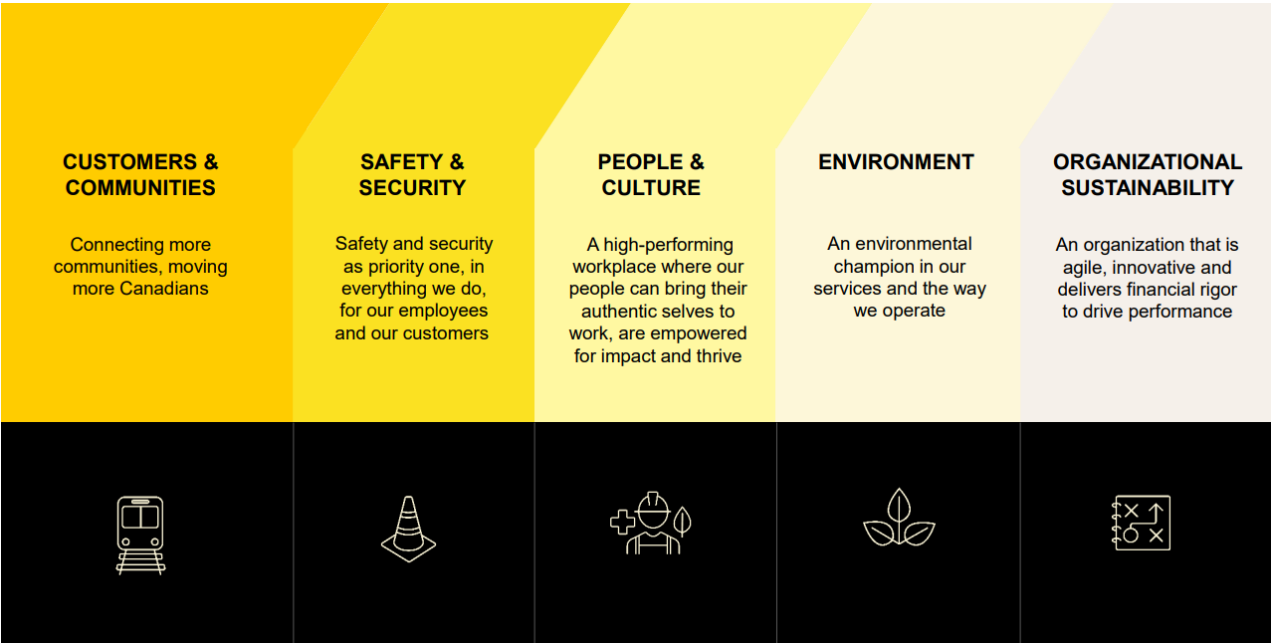


Responsible Sourcing



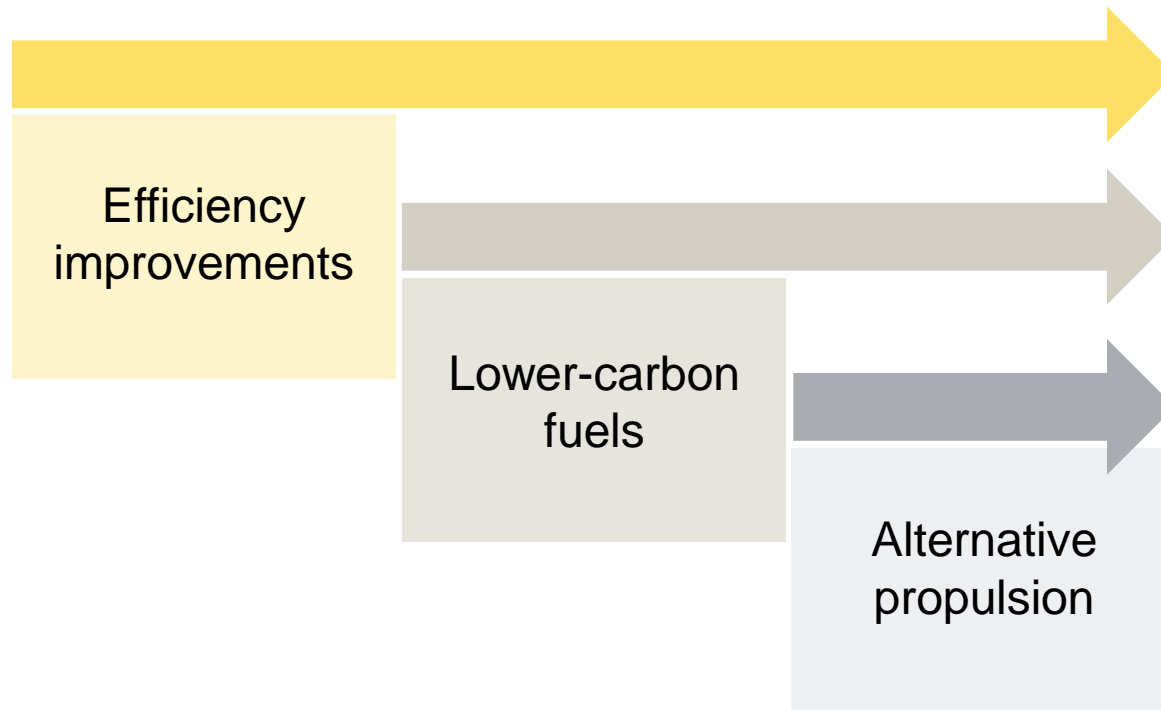
Credibility and recognition

## VIA Rail's new Strategic Plan: VIACTION 2030



# Decarbonizing our operations

## A plan in three overlapping stages



Reduce VIA Rail's GHG emissions by –50% by 2030 compared to 2005 (scope 1, 3 and 3 cat. 3)

## Example of initiatives underway



- Pilot project to test an AI-powered application to recommend most fuel-efficient train handling to locomotive engineers

# Our ambitious objective to offer a zero waste experience on our new Corridor fleet

An objective involving our complete operations cycle



## 1. What enters the train

- Reduce packaging and materials sourced on board
- Use reusable dishware when possible



## 2. What goes on, on the train

- Improve recycling and waste collection, using a cart
- Continuous improvement and gradual integration of organic waste collection

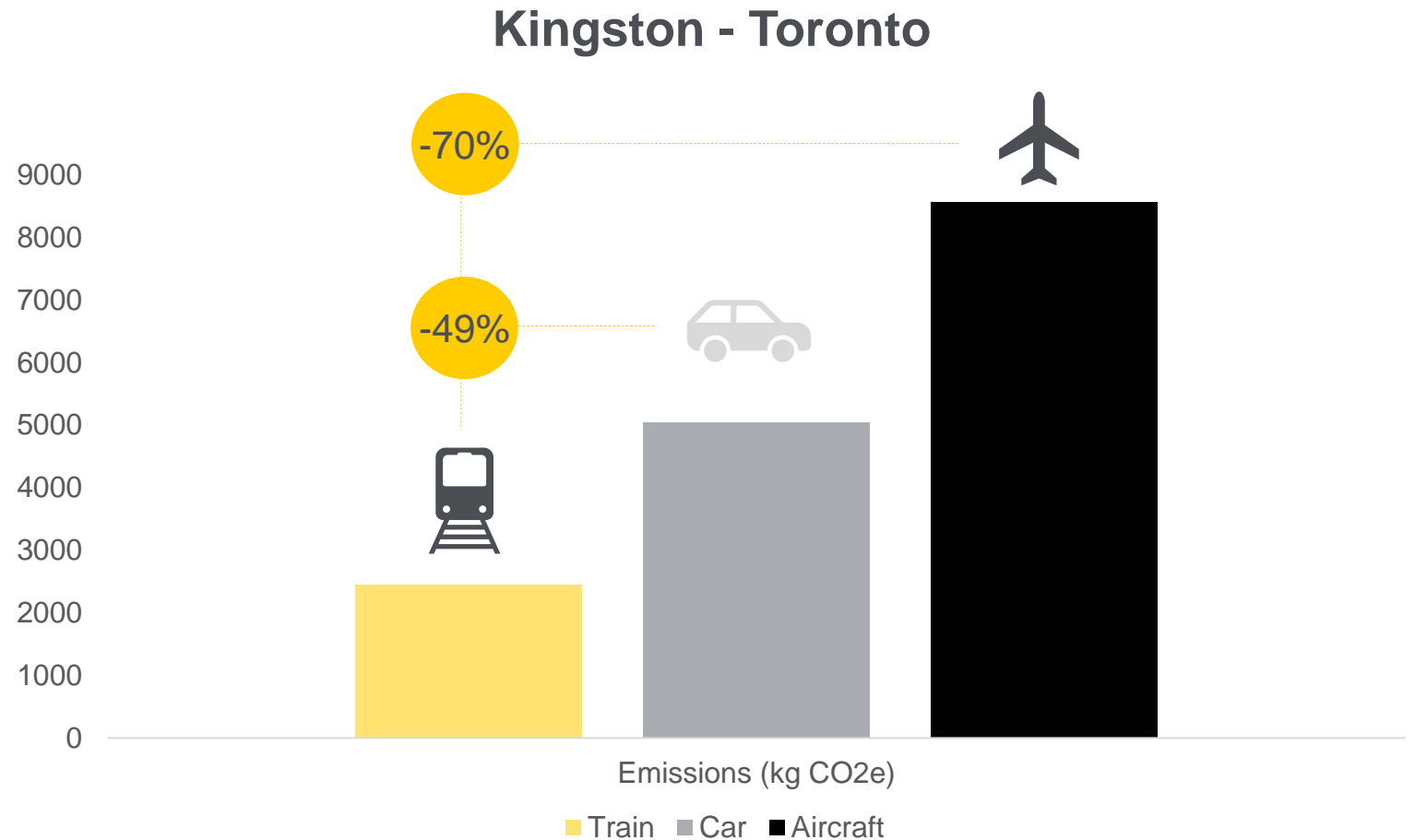


## 3. What leaves the train

- Optimize material collection in maintenance centres and stations: recycling, composting and waste

# Choosing rail on the Corridor can help reduce your carbon footprint

- **100** one-way trips from Kingston to Toronto
- ~ **2.5 tons** of CO<sub>2</sub>e saved by taking the train compared to **road travel**



*CO<sub>2</sub>e emissions calculation methodology*

Calculations based on one-way trips. Train CO<sub>2</sub>e based on VIA Rail's five-year average of total fuel consumption and passenger-km (excluding 2020) and conversion factors from the latest ECCC inventory report conversion factors. Aircraft CO<sub>2</sub>e based on five-year average of DEFRA emissions factors for domestic flights (excluding 2020) and IPCC recommended radiative factor.



# A new generation of trains on the Québec City-Windsor corridor





# Thank you.

